

## Don Quichote de la Mancha

Rob Goorhuis

## Allegretto (Don Quichote)

9

5

*f* *mf*

4

*p*

18

3

23

*mf* *f*

31

4

*mp* *cresc.*

*f*

39

4

*mp*

*f*

52

*mf* *f*

60

2

Ritard.

A tempo

3

*p*

Romance (Dulcinea)

9

77

8

85

*sonore*

*pp*

93

4

Musical score for a single melodic line, likely for a violin or flute. The score is written in treble clef with a key signature of one flat (B-flat). The tempo and dynamics are indicated throughout.

**Measures 99-107:** Starts with a *p* (piano) dynamic, followed by a *mf* (mezzo-forte) dynamic and a *dim.* (diminuendo) marking.

**Measures 115-128:** Includes a *p* dynamic. The section is titled **Vivente (Sancho Panza)**.

**Measures 141-148:** Features a *mf* dynamic, a crescendo leading to a *f* (forte) dynamic, and a *dim.* marking.

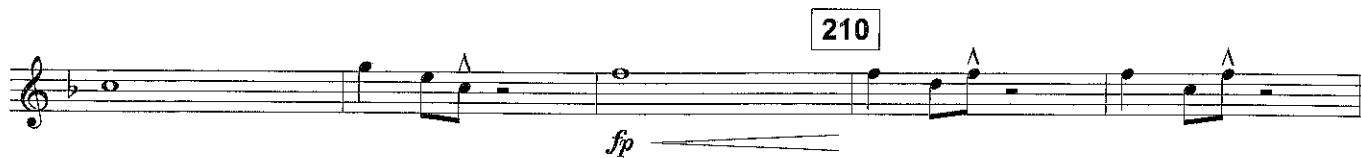
**Measures 156-167:** Includes a *mf* dynamic and a *dim.* marking.

**Measures 178-187:** Includes a *mp* (mezzo-piano) dynamic and a *Str. mute* instruction.

**Measures 194-200:** Includes a *Ritard.* (ritardando) instruction, followed by a *2* (second ending) and an *Accelerando poco a poco* instruction.

The score concludes with a final double bar line.

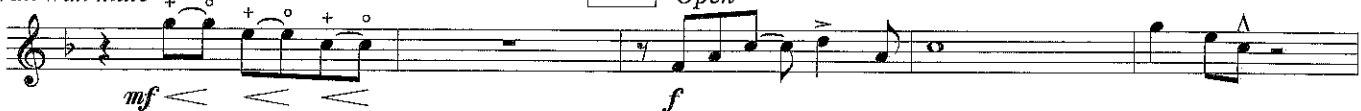
**Allegro (Rosinante)**



Wah wah mute

219

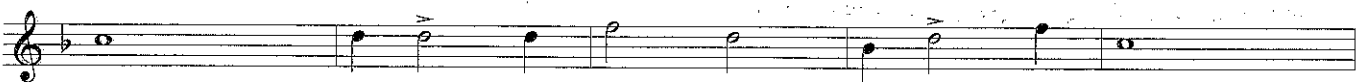
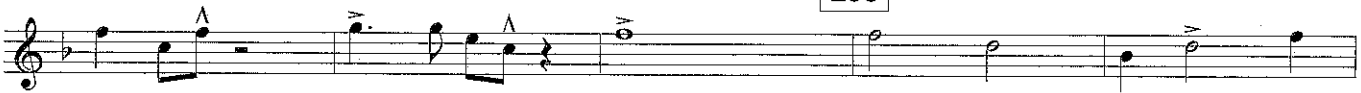
Open



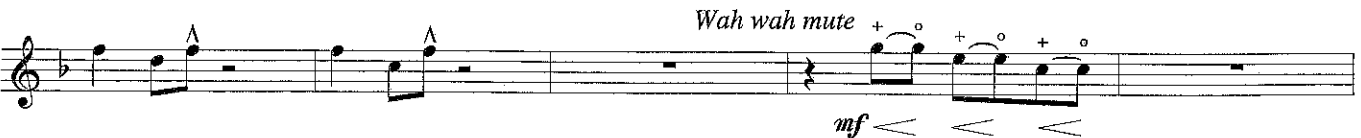
227



235

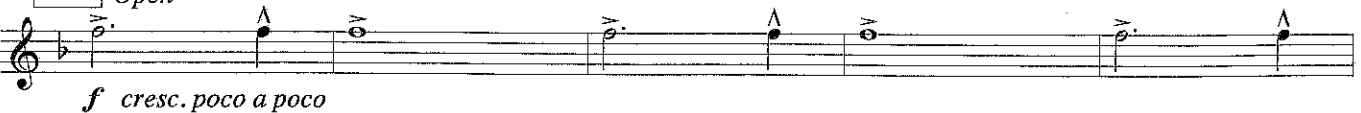


243



252

Open



258

Poco maestoso



Ritard.

A tempo

