

# Don Quichote de la Mancha

Rob Goorhuis

## Allegretto (Don Quichote)

*f*

*mf*

*mf*

*f*

*mp* *cresc.*

*f*

*mf*

*mp*

*f*

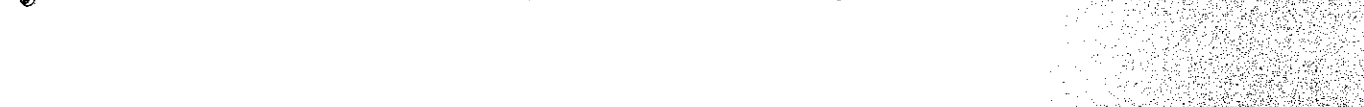
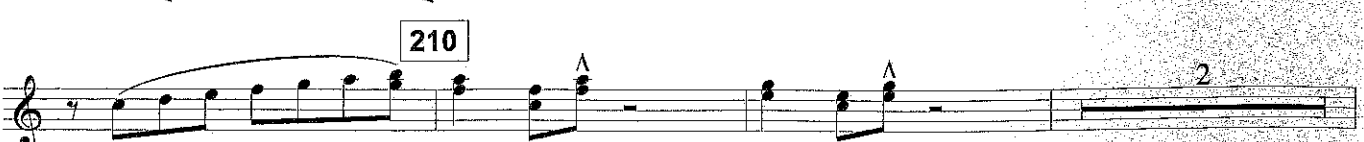
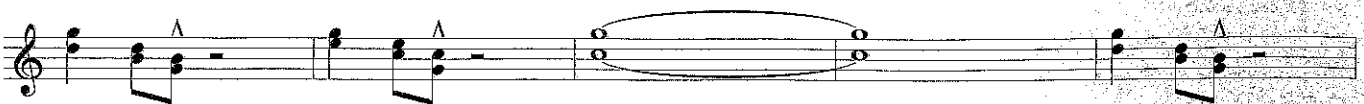
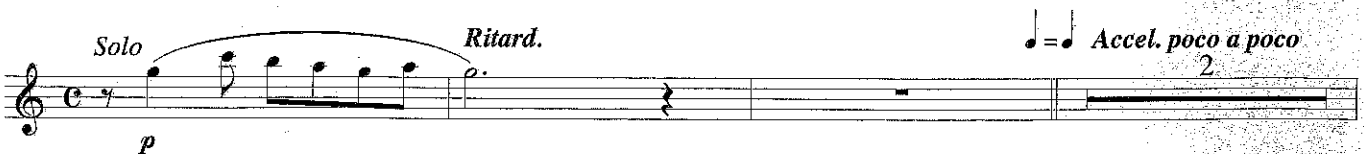
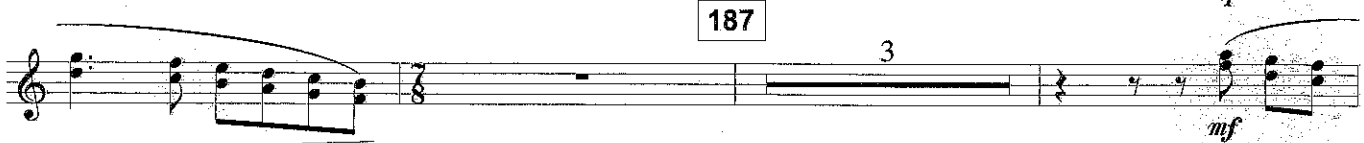
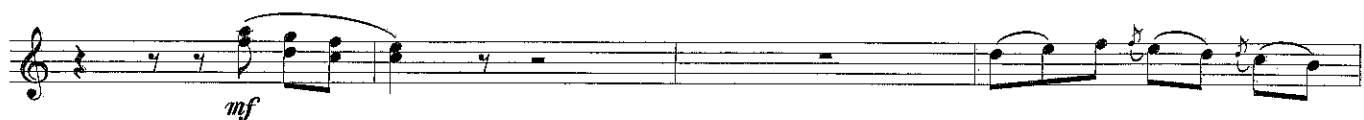
*f*

*dim.*

*p*

*Ritard.*

*A Tempo Solo*



Romance (Dulcinea)

77

A. Sax. 1

Musical score for Romance (Dulcinea). The score is written for a single staff in treble clef with a key signature of one sharp (F#) and a 3/4 time signature. It begins with a 9-measure rest, followed by a 2-measure rest, and then a melodic line starting with a mezzo-piano (mp) dynamic. The melody features various intervals, including a tritone. A crescendo (cresc.) is marked over a series of eighth notes. The score includes several measures of sustained chords, with a 'ten.' (tension) marking above one. Measure numbers 85, 93, 99, 107, and 115 are indicated in boxes. Dynamics include p (piano), mp (mezzo-piano), and mf (mezzo-forte).

9 2 mp

cresc. mp

ten.

p

p cresc.

mf

p

85 93 99 107 115

Vivente (Sancho Panza)

128

Musical score for Vivente (Sancho Panza). The score is written for a single staff in treble clef with a key signature of one sharp (F#) and a 3/4 time signature. It begins with a 128-measure rest, followed by a melodic line starting with a forte (f) dynamic. The melody is characterized by eighth-note patterns and various intervals. Measure numbers 141 and 148 are indicated in boxes. Dynamics include f (forte) and mf (mezzo-forte).

f

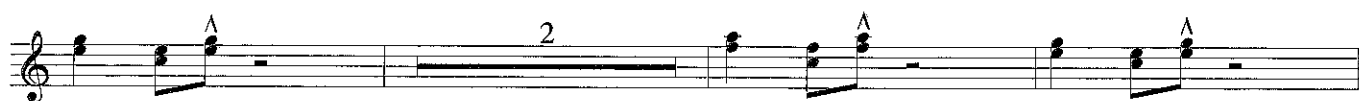
mf

141 148

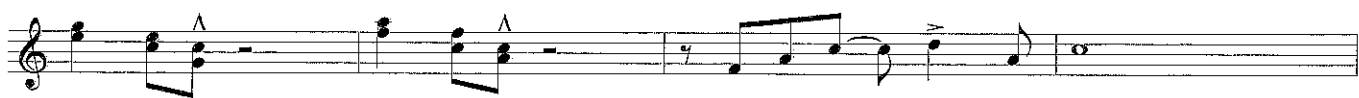
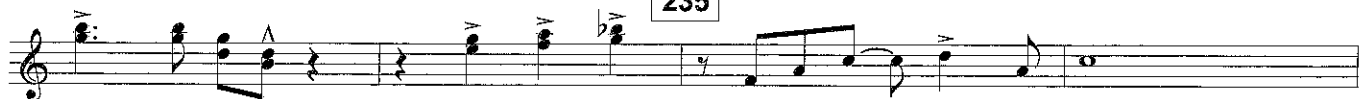
219



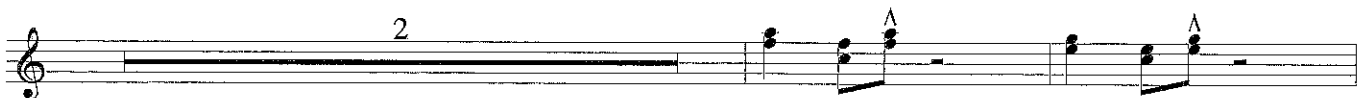
227



235



243



252



258

Poco maestoso



Ritard.

A Tempo

