

Don Quichote de la Mancha

Rob Goorhuis

Allegretto (Don Quichote)

f

mf

mf

mf

f

mp *cresc.*

f

mf

mp

f

f

dim.

Ritard.

A tempo

Romance (Dulcinea)

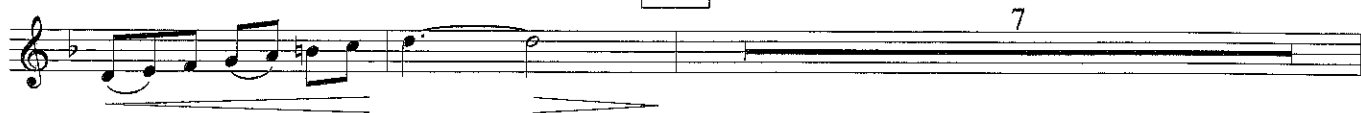
Musical score for Romance (Dulcinea), measures 77 to 115. The score is written in treble clef with a key signature of one sharp (F#) and a 3/4 time signature. The melody is characterized by a mix of eighth and sixteenth notes, often beamed together. Dynamics include *p* (piano), *mp* (mezzo-piano), *mf* (mezzo-forte), *f* (forte), *cresc.* (crescendo), *dim.* (diminuendo), and *ten.* (tenuto). Measure numbers 77, 85, 93, 99, 107, and 115 are indicated in boxes. A four-measure rest is present in measure 85.

Vivente (Sancho Panza)

Musical score for Vivente (Sancho Panza), measures 128 and 129. The score is written in treble clef with a key signature of one flat (Bb) and a 3/4 time signature. The melody is more rhythmic, featuring eighth and sixteenth notes. Dynamics include *f* (forte) and *mf* (mezzo-forte). Measure number 128 is indicated in a box.



141



148



156



167



178



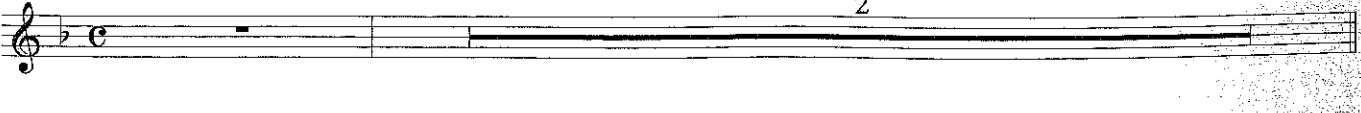
187



194



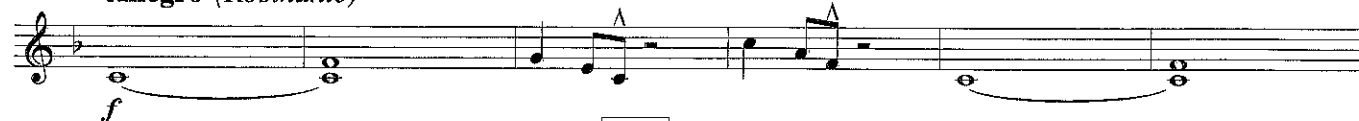
Ritard.



$\text{♩} = \text{♩}$ *Accelerando poco a poco*



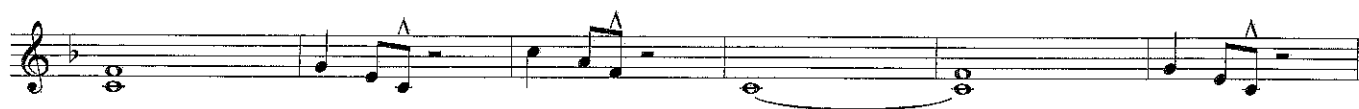
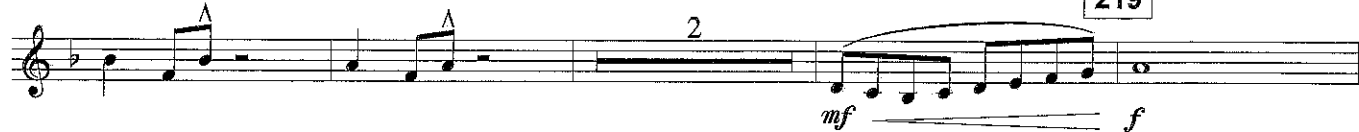
Allegro (Rosinante)



210



219



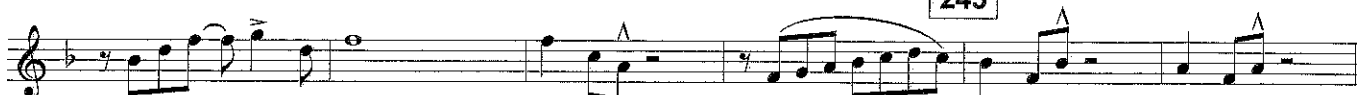
227



235



243



252



258



Poco maestoso

